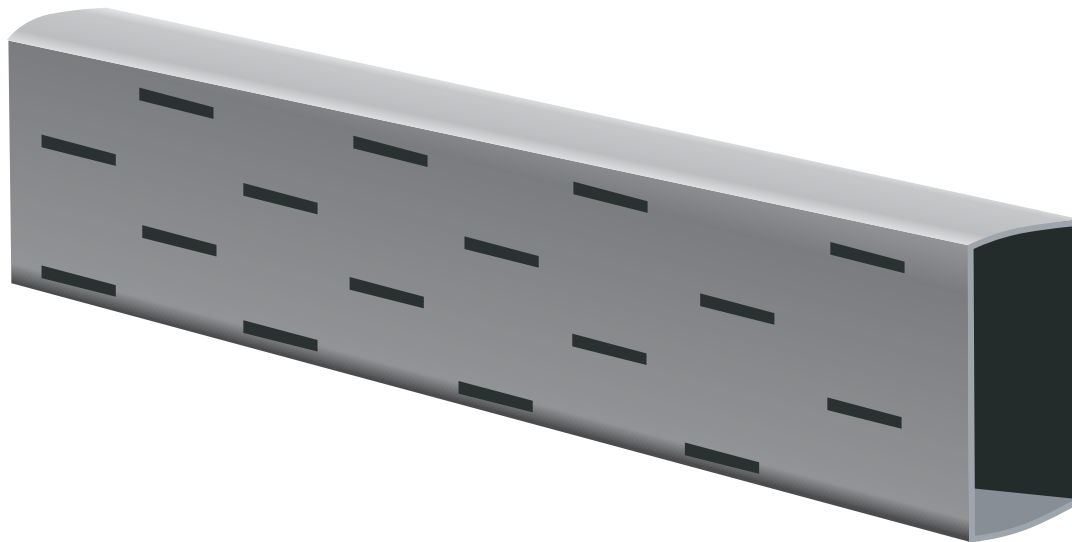


Under Slab Drainage Pipe



ECP SDS functions as an under-slab interior foundation drainage system and a perimeter radon evacuation system. It is designed to relieve hydrostatic pressure buildup under the slab, allowing water to travel through the system to the ECP Sump Basin. When used in conjunction with the ECP Water Channel, the system will collect and remove water before it can flood your basement. It gives all the benefits of an under slab system with the ease of installation of a top of footing system. This system requires less excavation and removals than traditional interior drainage systems, giving the customer a quicker, less disruptive project.

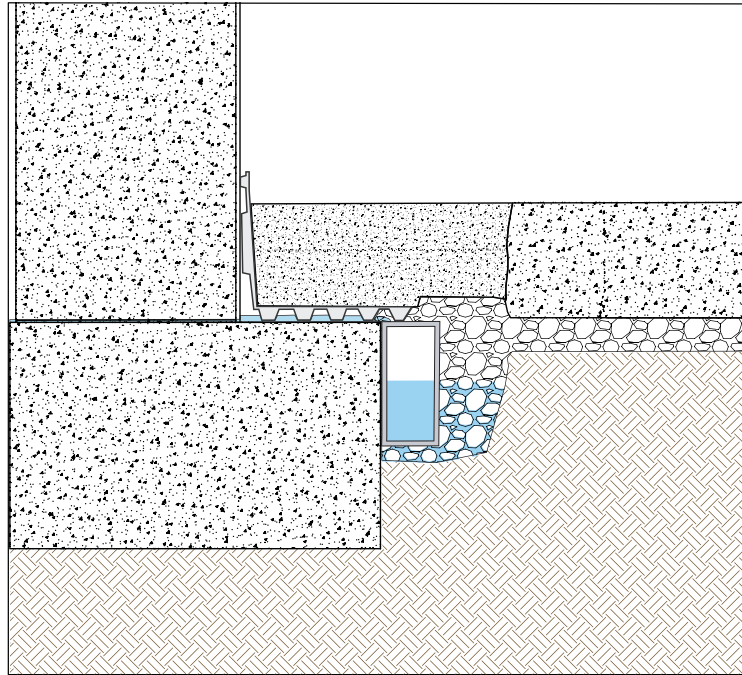
Advantages:

- Minimizes excavation and removals
- Relieves hydrostatic pressure before water reaches slab
- Greater water intake capacity than traditional systems
- Serviceable system with clean out ports
- Fast installation, finish job more quickly
- Strong rigid construction eliminates any sagging in system

**EARTH
CONTACT
PRODUCTS**
1-866-327-0007

15612 S Keeler Terr.
Olathe, Ks 66062
Phone: 913-393-0007
Fax: 913-393-0008
info@getecp.com
www.getecp.com

Technical Information and Specifications



System components are manufactured from a high-strength thermoplastic compound. The system consists of extruded rectangular drainage channels, couplings, 90° & 45° corners, drain outlets and clean outs. Lineal sections are manufactured as hollow rectangular tubes having slots in the exterior vertical face to allow the entrance of ground water. Water travels through the system to outlet fittings which provide the connection of ECP SDS to our ECP Sump Basin.

All sections shall be made from an acceptable rigid PVC compound such that the finished product meets the minimum Youngs Modulus = 320,000 psi, Specific Gravity = 1.4, and minimum Allowable Yield Stress = 5,500 psi. Couplings and corners are manufactured for assembly with male to female connections with lineal sections, without mechanical or solvent fastening.

ASTM F 891: (for load deflection and impact) PVC Plastic Pipe Type PS 25

ASTM F 405: (for flow characteristics) Slotted Corrugated PE Tubing

EPA 402-R-94-009: Model Standards & Techniques for Control of Radon

ICC-ES Legacy Report # 95-37.01

Size: 2.25" x 4" x 12'
Weight: 8.52 lb/ lineal section
Packaging: 120 pcs/bundle
Color: Gray
Construction: Rigid PVC compound
Uses: Interior, under-slab drainage system

**EARTH
CONTACT
PRODUCTS**
1-866-327-0007

15612 S Keeler Terr.
Olathe, Ks 66062
Phone:913-393-0007
Fax:913-393-0008
info@getecp.com
www.getecp.com

