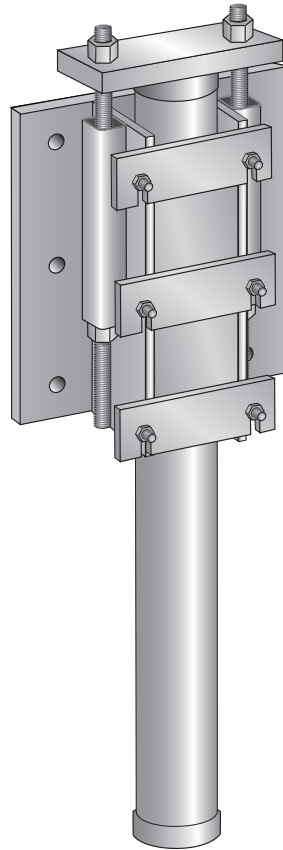


PPB-350-WM - Underpinning Bracket



Product Specifications

| | |
|-----------------------|--------------------------------------|
| Product Style | Underpinning Bracket |
| Component | PPB-350-WM Steel Pier |
| Capacity | 107 Kip |
| Bearing Surface | 244 Square Inches |
| Lift Capacity | Fully Adjustable for Unlimited Lift |
| Coating | Black (Optional Hot Dip Galvanized) |
| Pier Pipe Spec | ASTM A500 |
| Standard Package | 1 |
| Standard Package Unit | Each Bracket w/ 14' of pier material |
| Weight | 223 lbs. (1784 lbs per pallet for 8) |

Notes

Underpinning Bracket Assembly

Optional: PPb-350-IP, PPB-350-SB and High Strength Non-Shrink Grout