



ECP Boardwalk Foundation

The ECP Boardwalk Foundation System provides the convenience of replacing traditional concrete methods of installing foundations with a more economical and greener solution.

ECP Helical Torque Anchors™ have a proven track record in allowing contractors to save time and money while not disturbing the surrounding terrain or ecosystem.

ECP Boardwalk Foundation Systems can be easily removed when placed for temporary applications. With many sizes and pile configurations available, ECP can design and recommend the correct anchor for your job.

Advantages of the ECP Boardwalk Foundation

- Economic
- Quick Installation
- No Spoils Created
- All Weather Installation
- No Vibration Installation
- Permanent or Temporary Applications
- No Concrete Cure Time
- Environmentally Friendly
- Immediate Loading Capabilities
- Made in the USA

ECP's Design and Engineering Department offers the most trusted service in the industry. ECP caters to the development of reducing greenhouse gases and smaller carbon footprints, while maintaining modern living standard.



“Designed and Engineered to Perform”



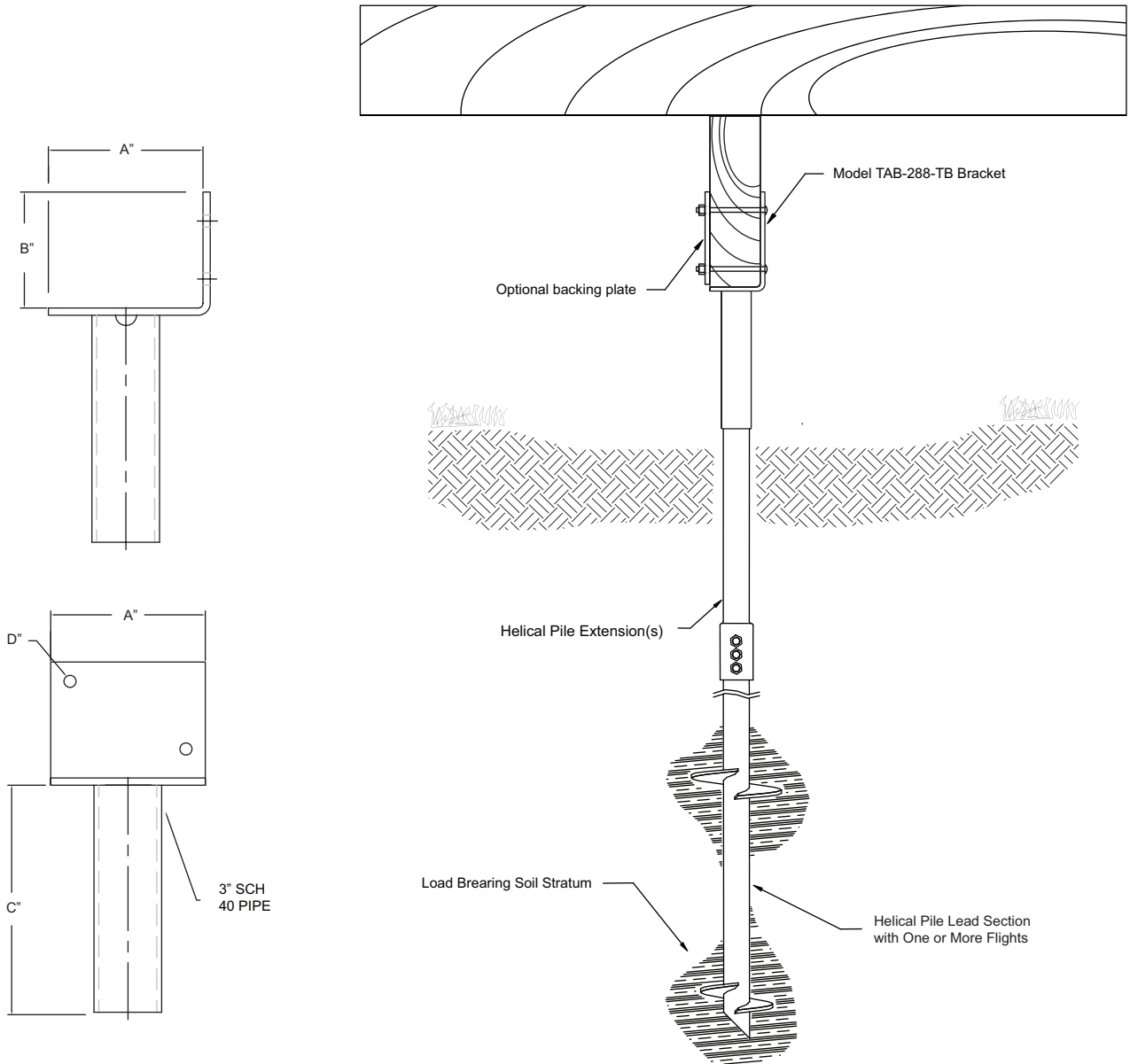
EARTH CONTACT PRODUCTS

1-866-327-0007

15612 S Keeler Terr.
Olathe, Ks 66062
Phone: 913-393-0007
Fax: 913-393-0008
info@getecp.com
www.getecp.com



ECP Boardwalk Foundation System



Benefits of the ECP Boardwalk Foundation

- No Soil Excavation
- Lower Installed Costs
- Quick, Easy Install
- Install in Limited Access Areas
- Immediate Loading
- No Concrete
- One Trip Installation
- Engineered Capacities
- Universal Compatibility
- Made in USA

Model TAB-288-TB Timber Bracket
Application Drawing

**EARTH
CONTACT
PRODUCTS**

1-866-327-0007

15612 S Keeler Terr.

Olathe, Ks 66062

Phone: 913-393-0007

Fax: 913-393-0008

info@getecp.com

www.getecp.com

Custom sizes and configurations available upon request.